



# Reddings Retreat local walks, scenic views & beauty spots guide

---

## Sightseeing

National Trail. (Photo source: TripAdvisor)



### Offa's Dyke Path

The circular route of Tintern - Offa's Dyke - Devil's Pulpit - Brockweir - Tintern is an must, with breath taking views and wonderful photo opportunities along the way.



### The Anchor Inn

**10** locals recommend

Trying one of three circular walks starting at the Anchor Inn in Tintern are a fabulous way to explore the local area.

The Anchor, Brockweir and the Wye

3 miles: Fairly easy

Along and across the Wye to a historic English village, returning via woodland.

The Angidy valley

3¾ miles: Fairly easy

Woodland walking and industrial heritage on a walk with several options for short-cuts.

Offa's Dyke and the Devil's Pulpit

5½ miles: Moderate

Outward along an old tramway, with a high-level return offering fabulous views.

The three walks can be downloaded via this link:

<https://theanchortintern.co.uk/wp-content/uploads/2018/04/Anchor-walksfromdoor.pdf>

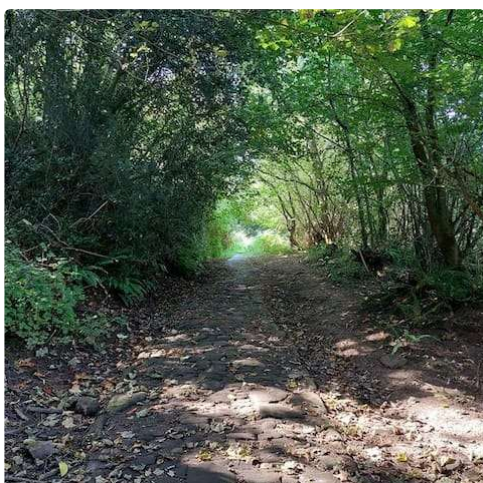


## Tintern Abbey

8 locals recommend

The following website links provide a great starting point to help plan your trip while staying at Reddings Retreat. The website include maps and suggested routes for exploring the local landscape.

Website: <https://www.wyevalleyaonb.org.uk/>



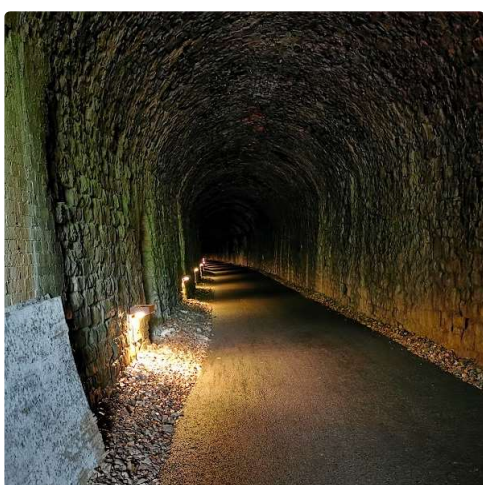
## Wye Valley Area of Outstanding Natural Beauty (AONB)

22 locals recommend

Reddings Retreat is situated in the Lower Wye Valley and is the perfect location to explore or just relax and look at the Wye Valley, an Area of Outstanding Natural Beauty.

The following website links provide a great starting point to help plan your trip while staying at Reddings Retreat in the Wye Valley. The website include maps and suggested routes for exploring the local landscape.

Website: <https://www.wyevalleyaonb.org.uk/>



## Wye Valley Greenway walking and cycling route to Tintern April to September

Reddings Retreat is ideally located in the heart of the Wye Valley and has the river Wye at the heart of the landscape and as easy access to numerous walks, treks and cycle paths. The Wye Valley Greenway walking and cycling route can be explored in reserve by starting from Tintern Abbey. The Wye Valley Greenway is a fully accessible cycle path to National Dive and Activity Centre (NDAC), Chepstow), the route goes through the 1080m long Tidenham tunnel.



## Symonds Yat

75 locals recommend

A short 20 minute drive will get you to Symonds Yat. From Symonds Yat Rock there are waymarked trails linking to the Forest Holidays campsite, to the River Wye and a choice of circular walks into the forest itself.

Discover the ancient hill fort, look out for birds of prey and then enjoy a snack from the log cabin café.

Five Forest England walks start from Symonds Yat:  
<https://www.forestryengland.uk/symonds-yat-rock/walking-trails-symonds-yat-rock>



## Severn Bridge

Less than 10 minutes' drive from Reddings Retreat, the Severn Bridge is a walk you will not forget. The Bridge is the gateway between England and Wales.



## Coleford

**8** locals recommend

A great market town in the Forest of Dean, which is a 20 minute drive from Reddings Retreat.



## Go Ape Forest of Dean (Beechenhurst Lodge - Tree Top Adventure FORMERLY JUNIOR)

**15** locals recommend

A great place for the children and adults to have a fantastic time explore the tree canopy. Takes around 2 hours to complete the course and suggest booking before hand to avoid any disappointment.

Address: [https://goape.co.uk/locations/forest-of-dean-mallards-pike?utm\\_source=google-my-business&utm\\_medium=organic&utm\\_campaign=GoApeMallardsPike](https://goape.co.uk/locations/forest-of-dean-mallards-pike?utm_source=google-my-business&utm_medium=organic&utm_campaign=GoApeMallardsPike)

Address: Mallards Pike Lake, Parkend, Gloucestershire, Lydney, GL15 4HD



## Forest of Dean

**50** locals recommend

We are an ideal location to explore the wonderful Forest of Dean. A short walk address Tintern Bridge takes you across the boarder in to England.



## Brockweir

Brockweir is a small but lovely village in England just north of Tintern across the River Wye in the Forest of Dean. A great place to explore.



## Eagle's Nest, The Wye Valley

A spectacular viewpoint which can be accessed via a short but steep walk from Lower Wyndcliffe Car Park, St Arvans, Chepstow, Monmouthshire, NP16 6HA  
Website: <https://www.visitmonmouthshire.com/Chepstow-Eagle's-Nest-Viewpoint-Wyndcliff-Wood/details/?dms=3&venue=1254050>

## Food scene



## The Old Station Tintern

**10** locals recommend

When walking along the River Wye footpath we suggest stopping at the The Old Station nestles beside the River Wye in the heart of the Wye Valley in Tintern. This idyllic 10 acre site boasts the best of what Monmouthshire has to offer; a varied selection of food from our newly refurbished cafe, family events and activity packs, a brand new children's play area, and a zip wire.



## Abbey Mill

In the heart of the village of Tintern, the Abbey Mill complex is a great place to refuel in their award winning cafe.



## The Anchor Inn

**10** locals recommend

The Anchor Inn is located next to Tintern Abbey and is within easy walking distance of Reddings Retreat. Its wide menu is a great place to eat.

## Neighbourhoods



## Symonds Yat

**75** locals recommend

You can reach the Symonds Yat Trail in around twenty minutes from Redding Retreat. Where you can explore the circular walking trail that follows paths through the Iron Age fort and into attractive woodland. There are ten nature trail boards with things to look out for along the way. A great walk suitable for all the family to an experienced hiker.



## Tintern

The village of Tintern offers a variety of shops, craft centres and vineyard, along with friendly local pubs. Tintern renowned for its scenic walks, countryside and is dominated by the abbey's impressive ruins. There is lots to explore in and around Tintern and we welcome walker and cyclists.

We are more than happy to help you plan and make the most of your stay in this beautiful area of Wales, to make your stay as special as possible at Reddings Retreat.



## Monmouthshire

Monmouthshire is a wonderful area to explore full of little gems.



## Chepstow

**20** locals recommend

Just a short drive from us and you can explore the historic town of Chepstow.